



CENTRO NAZIONALE
CLINICAL GOVERNANCE



Fondazione per la Ricerca
Scientifica Termale

Cure termali: esperienze a confronto per la condivisione delle buone pratiche

13 giugno 2024

Medicina Termale: network scientifico internazionale

Antonella Fioravanti

Rheumatology- Siena (Italy)

*Sbarro Institute for Cancer Research and Molecular Medicine and Center of Biotechnology, College of
Science and Technology, Philadelphia, USA*

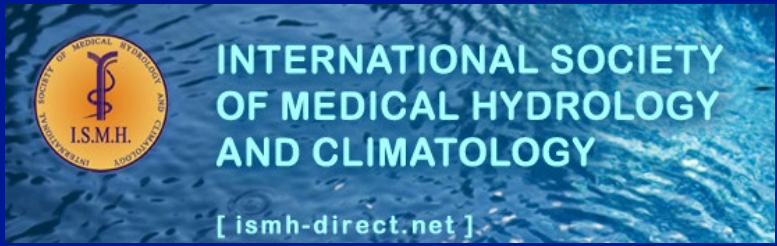
President of OMTh

Vice President of ISMH

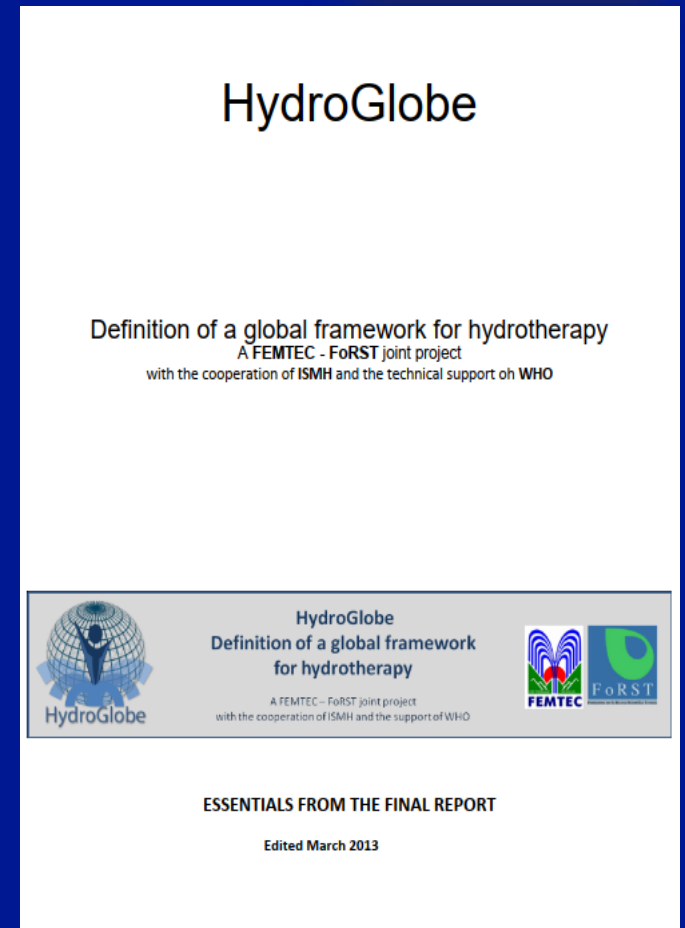




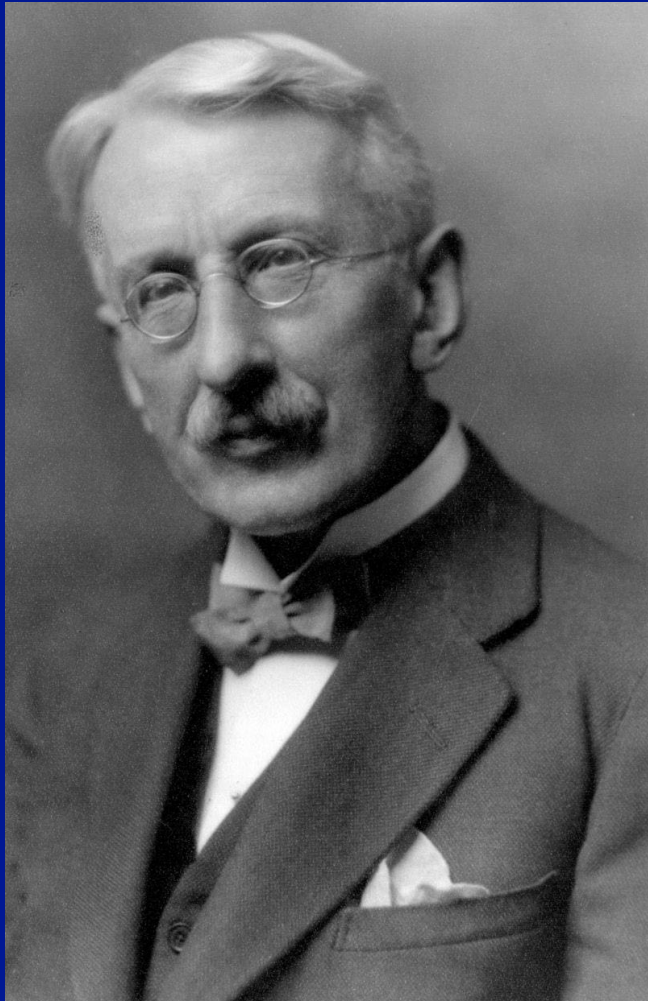
Ludwig Boltzmann
Cluster for
Rheumatology,
Balneology and
Rehabilitation,



WORLD FEDERATION OF HYDROTHERAPY AND CLIMATOTHERAPY (FEMTEC)



International Society of Medical Hydrology and Climatology



The federation was founded in the December 9th, 1921 in London Dr. Robert Fortescue Fox, London, was elected the first President

The federation is non-profit and comprises the international union of physicians, scientists, institutions, and other establishments based on the area of Medical Hydrology, Balneology, Climatology, and Thalassotherapy

The purpose of the ISMH is to design, plan, and co-ordinate scientific research in the fields of Health Resort Medicine and Balneotherapy for prevention, treatment, and rehabilitation programs



**47th ISMH WORLD CONGRESS (May 23-25, 2024), conjoined
with The Romanian National Congress of Physical and
Rehabilitation Medicine and Balneology (May 21-22, 2024),
Techirghiol, Romania**

Motto: "EVIDENCE-BASED BALNEOLOGY"



MAIN COUNTRIES

❖ Mancanza di contributi relativi a:

- ❖ Reumatologia (Osteoartrite, Lombalgia, S. Fibromialgica)
- ❖ Spagna
- ❖ Francia
- ❖ Neurologia del apparato digerente
- ✓ Integrazione Istituti di Ricerca-Stabilimenti termali
- ❖ Patologia delle vie respiratorie (comprese ORL)
- ✓ Organizzazione di studi Multicentrici Nazionali e Internazionali
- ❖ Patologia endocrino-metabolica
- ✓ Idonei Finanziamenti
- ❖ Intelligenza artificiale



- *Créée fin 2004 à l'initiative des organisations nationales représentant le thermalisme, l'association a pour objectif de promouvoir la recherche en médecine thermale par des méthodes scientifiques éprouvées.*
- *L'AFRETh dispose du soutien financier de collectivités territoriales et des exploitants thermaux*
- *19 appels à projets (2005-2024) ont permis de financer plus de 60 projets de recherche validés sur le plan scientifique*

Ludwig Boltzmann Cluster for Rheumatology, Balneology and Rehabilitation



Ludwig Boltzmann Cluster for
Rheumatology, Balneology and
Rehabilitation,

Cell
Biology
International

van der Zee-Neuen et al.
BMC Musculoskeletal Disorders (2022) 23:743
<https://doi.org/10.1186/s12891-022-05691-1>

BMC Musculoskel
Disord

RESEARCH

Open Access

Sustained improvements in EQ-5D utility scores and self-rated health status in patients with ankylosing spondylitis after spa treatment including low-dose radon – an analysis of prospective radon indication registry data

Radiat Environ Biophys (2015) 54:123–136
DOI 10.1007/s00411-014-0568-z

ORIGINAL PAPER

Radon balneotherapy and physical activity for osteoporosis prevention: a randomized, placebo-controlled intervention study

Martina Winklmayr · Christian Kluge ·
Wolfgang Winklmayr · Helmut Küchenhoff ·
Martina Steiner · Markus Ritter · Arnulf Hartl

ORIGINAL ARTICLE



International Journal of Public Health
ORIGINAL ARTICLE
published: 08 June 2023
doi: 10.3389/ijph.2023.1605931

Inh
blo
in t

B. Kl

Improvement of Pain Symptoms in Musculoskeletal Diseases After Multimodal Spa Therapy in the Austrian Gastein Valley—A Study Based on Longitudinal Registry Data

Antje van der Zee-Neuen^{1,2,3,4,5,*}, Julia Fuchs^{1,2,4,5}, Sonja Wildburger^{1,2,4,5},
Martin Gaisberger^{1,2,5}, Margreet Kloppenburg^{6,7}, Antonella Fioravanti⁸, Tanja Stamm^{5,9},
Martin Offenbaeche¹⁰, Rudolf Radmueller¹¹, Wolfgang Foisner¹¹, Bertram Hoelzl^{10,12} and
Markus Ritter^{1,2,4,5,13}

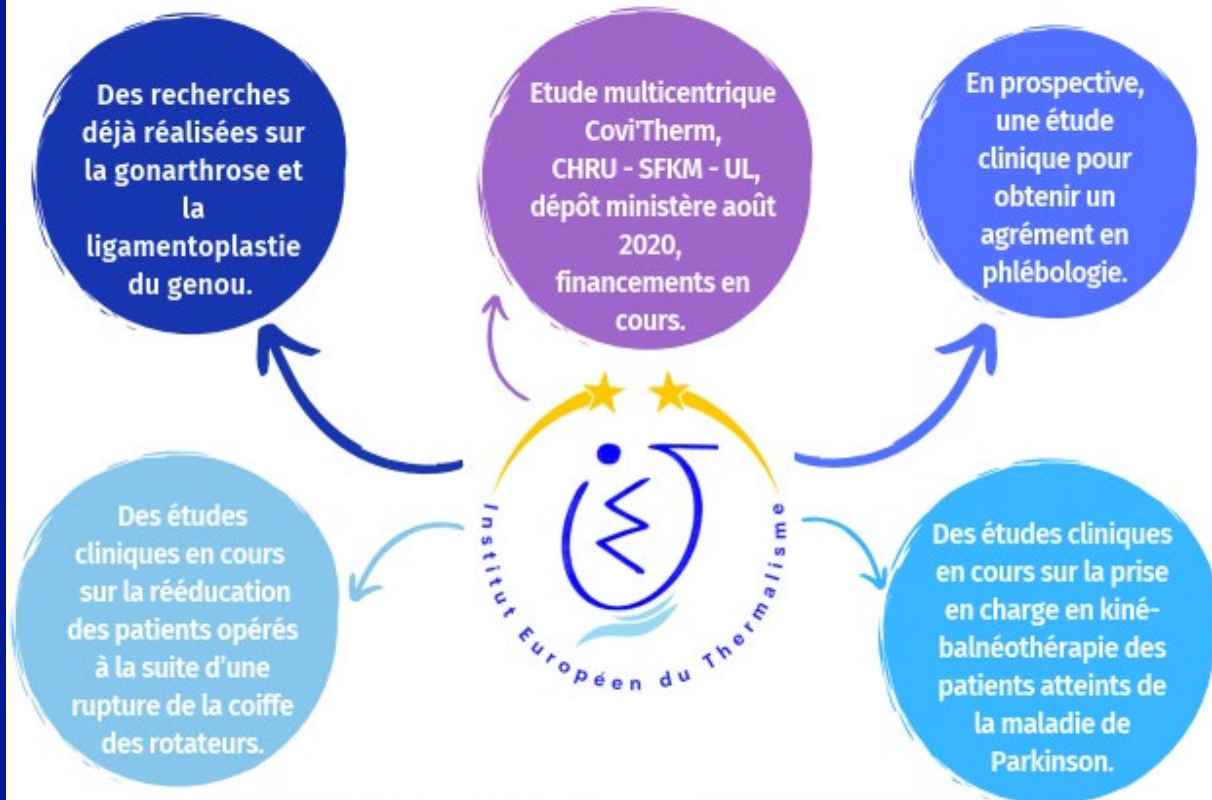
gen sulphide
expression

Institut Européen du Thermalisme-Fondation de l'Université de Lorraine



Recherche
Formation
Innovation

Les recherches et Etudes



Therma' park, UFR staps / Université de Lorraine
Début 2018, Métropole / France parkinson,
en voie d'achèvement, promotion des résultats

Therma'scap, Chru - C, Pasteur -
Université de Lorraine
Début mars 2022 / AAP Afreth.

Organisation Mondiale du Thermalisme
World Hydrothermal Organization
Organización Mundial del Termalismo
Welt Organisation des Thermalismus
Organizzazione Mondiale del Termalismo



Interested in Medical Hydrology or in the development of Health Resorts or Thermal tourism

*Stimulate and Promote in all countries investigations
and studies in different field (medicine, architecture, engineering, economics, sociology, chemistry,
physics, geology) with direct or indirect connection to Balneotherapy*

*Collaborate in the realization of a legislation at international level and in each country for the
standardization of hydrothermal techniques and for their clinical applications*

OMTh e Ricerca Scientifica Termale: Il Ruolo Delle Associazioni Dei Malati



ONLINE SURVEY



TERME E FIBROMIALGIA



Terme e Fibromialgia

B **I** **U**  

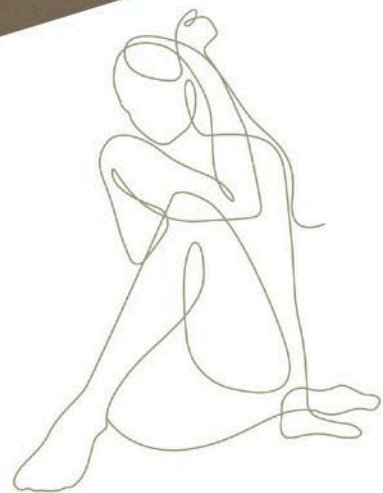
Sondaggio sulla percezione dell'utilità delle *Terapie Termali* nel trattamento della *Sindrome Fibromialgica Primaria*

1500 PAZIENTI HANNO RISPOSTO IN MENO DI 10 GIORNI



Prof. Piero
Dr.ssa Anna
Elena Giannini





TERME E FIBROMIALGIA: UN AMORE INCOMPRESO

LEVICO (TN) 22 • 23 giugno 2024

PRESIDENTI DEL CONVEGNO
PIERCARLO SARZI PUTTINI
GIUSEPPE PAOLAZZI



PALAZZO DELLE TERME
DI LEVICO (TN)

STUDIO FIBROTHERM



*Progetto del Gruppo di studio della Società Italiana di
Reumatologia (SIR)*

*Impatto della terapia termale sugli indici algo-funzionali,
sulla qualità di vita e sui sintomi ansioso-depressivi nella
Sindrome Fibromialgica Primaria*

STUDIO FIBROTHERM



Studio no-profit di tipo osservazionale policentrico longitudinale di coorte
(Clinical.Trials.gov, Numero di codice: NCT05801497)

*11 Centri di Ricerca (Reumatologia, Riabilitazione, Medicina Interna) di
diverse Regioni Italiane*

Coinvolgimento degli stabilimenti termali limitrofi

Coinvolgimento delle Associazioni dei pazienti

Termine ultimo per l'arruolamento: 30 novembre 2024

Word clouds of some key attributes of clinical research networks



From: Li G et al Key factors of clinical research network capacity building. *J Venom Anim Toxins Incl Trop Dis*. 2018

Medicina Termale: network scientifico internazionale

Antonella Fioravanti

Rheumatology- Siena (Italy)

Sbarro Institute for Cancer Research and Molecular Medicine and Center of Biomedical Research in Nanomedicine, Nanobiotechnology, and Nanoscale Science and Technology, Philadelphia

Thanking you for your attention !

